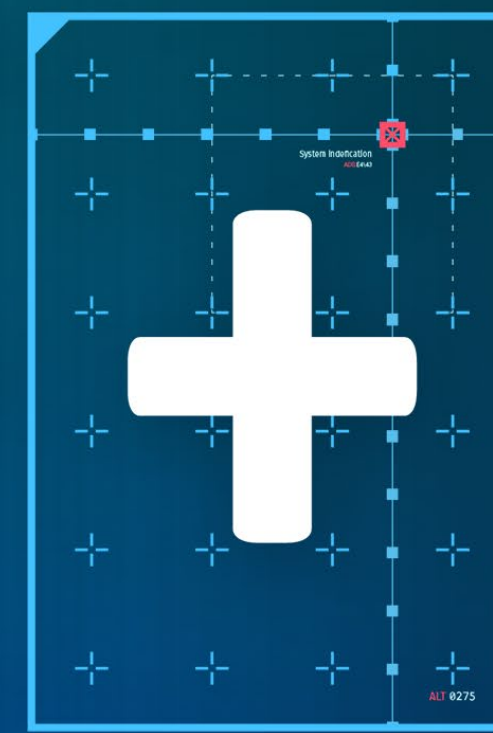
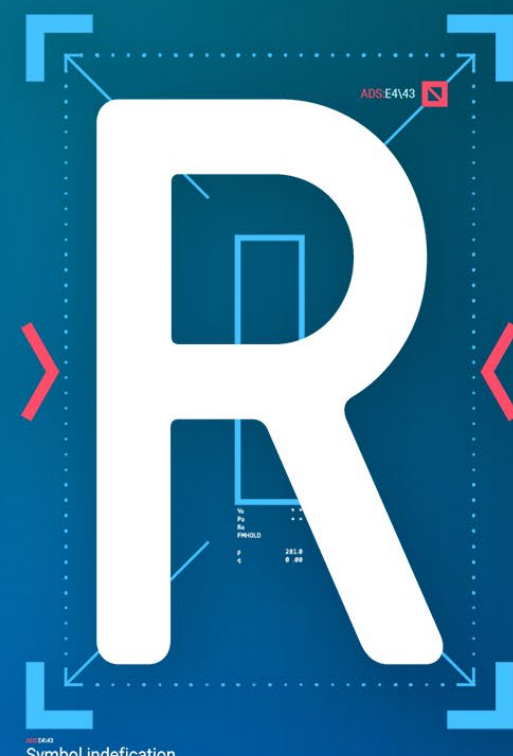
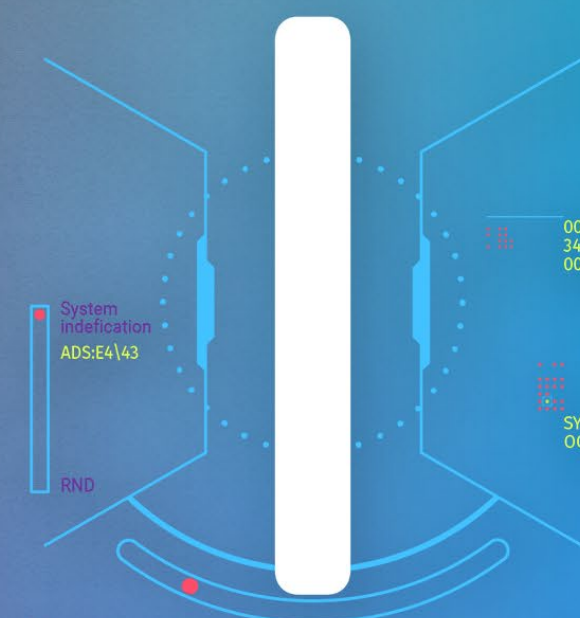




T H E



R E P O R T

POWERED BY



WIZELINE

TABLE OF CONTENTS

01

WELCOME TO THE AI.R+ REPORT

14

WIZECORES IN ACTION

22

AUTHORS AND ACKNOWLEDGEMENTS

06

WHAT ARE THE WIZECORES?

21

WHAT COMES NEXT?

23

ABOUT WIZELINE

WELCOME TO THE AI.R+ REPORT

Like other organizations, Wizeline took a hard right turn eighteen months ago, to reposition itself, its business and its offerings to better reflect the realities of a world dominated by the promise of AI. Since then, we've learned a thing or two.

And the most important thing, after hundreds of client conversations and engagements, we recognize that as an industry, we've entered a period of 'inflated expectations.' Expectations about what AI can do for a business, including but certainly not limited to reducing headcount, improving productivity, generating new revenue streams, and frankly everything in between.

Now, all of these expectations can certainly be realized, but only with an approach to AI that embraces responsibility and focuses on results.

And with that, Wizeline AI.R+ was born.

AI.R+ is Wizeline's new operating framework that positions AI at the heart of all we do, transforming culture, accelerating productivity, and delivering innovation.

This framework is based on three key pillars:

WIZEAcademy, our initiative to elevate talent through AI-focused learning and development, enabling future-proofed careers.

WIZEBrain, the infusion of AI tools and techniques into our work at every stage of the software development lifecycle to unlock exponential productivity.

And the focus of this report, WIZECores, leveraging our proven AI accelerators to build and scale next-gen AI products.

By evolving our approach to talent, software engineering, and product development, Wizeline is able to unlock client results, work smarter and faster and deliver groundbreaking AI solutions, responsibly.



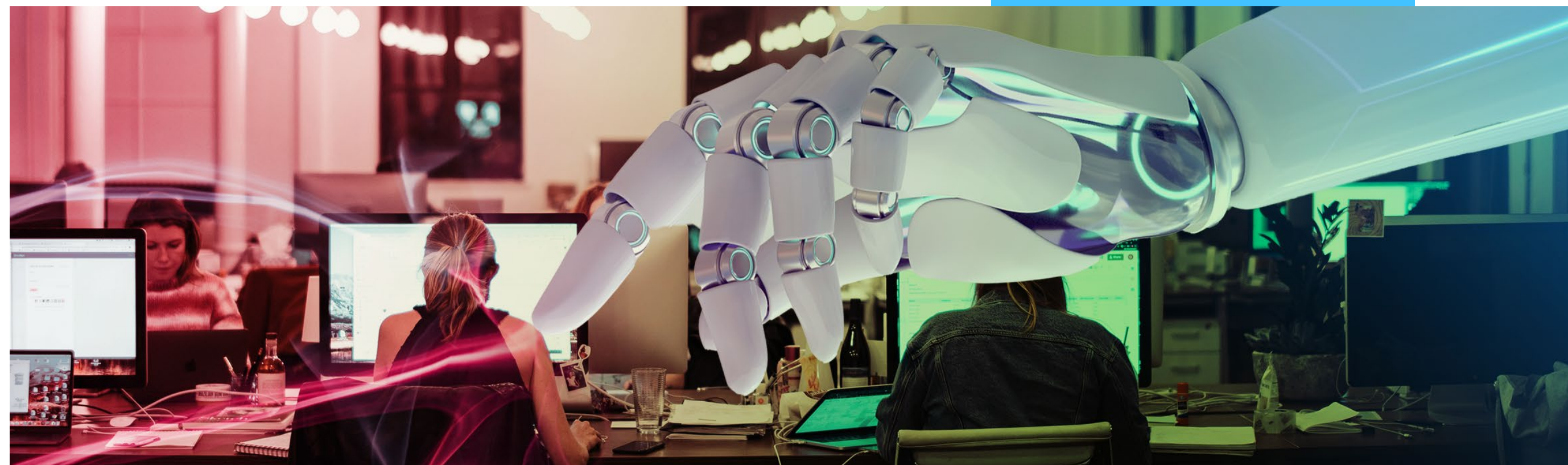


AI is not a new concept, and in fact has been around for quite some time., But ChatGPT's public launch in November 2022 dramatically accelerated Generative AI's adoption., while demonstrating that the future indeed had arrived.

According to Gartner, by 2026, more than 80% of enterprises will have used GenAI APIs or models, and/or deployed GenAI-enabled applications in production environments, up from less than 5% in 2023.

For example, Zoom used Synthesia's AI video platform to create interactive training for more than 1,000 sales representatives globally. Zoom accelerated video production by 90%, saving \$1,500 per employee.

AI shows promise in every business sector, and its influence continues to grow. For example, GenAI has the following applications:



Automation:

Streamlines content creation, reducing the need for manual labor in various tasks.

Problem-Solving:

Helps generate solutions to complex problems in fields like drug discovery, design, and data analysis.

Creativity and Innovation:

Enables the creation of novel content, art, and ideas, fostering creativity in various domains.

Data Augmentation:

Enhances the quality and quantity of data, benefiting machine- and deep-learning models.

Customization:

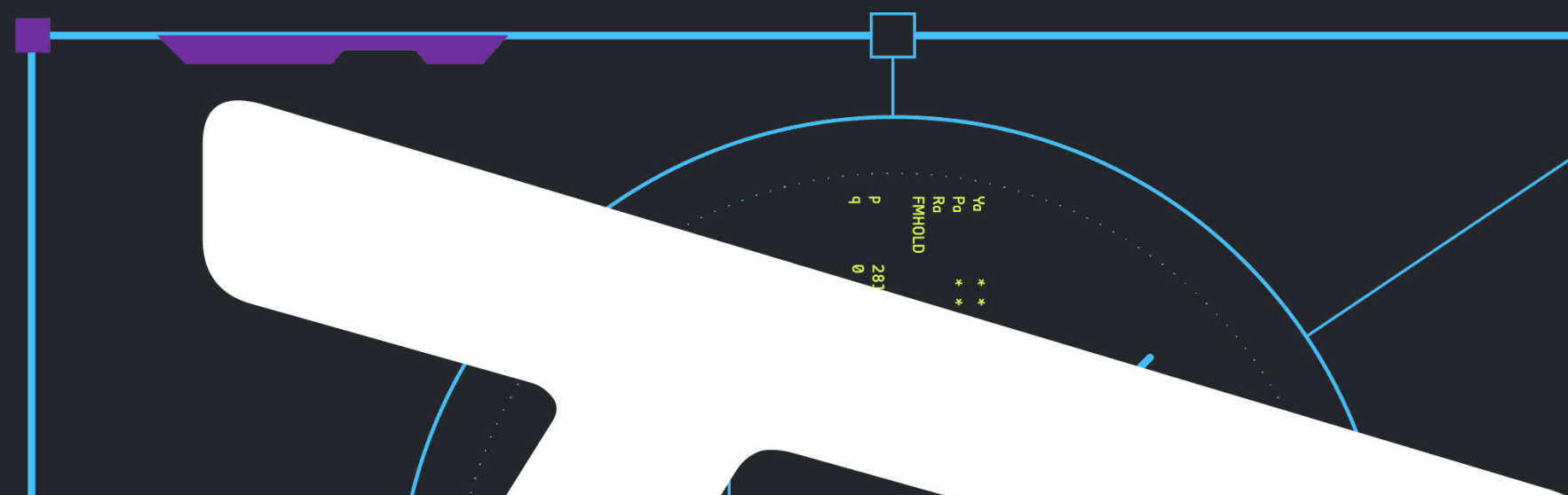
Create personalized content or recommendations, improving user experience.

While enthusiasm for AI is at an all-time high, several factors can hinder the actual deployment of AI capabilities in operations.

To be more direct, developing AI applications and products can be complex, time-consuming, & resource-intensive.

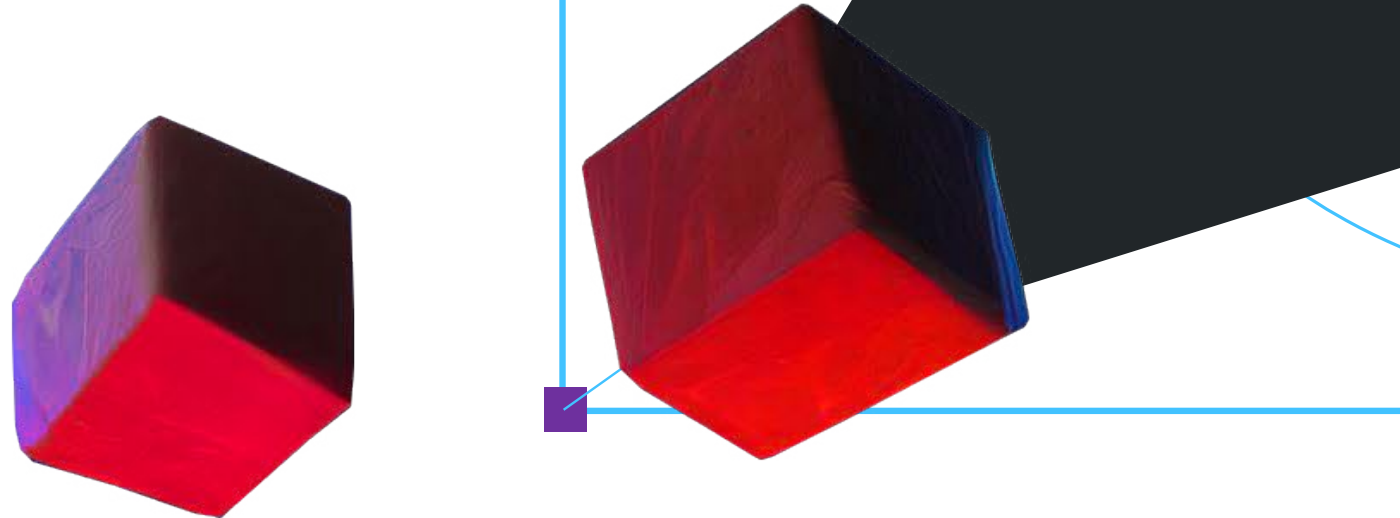
Many challenges stand in the way:

- need for large amounts of quality data
- selecting and fine-tuning algorithms
- high computational requirements
- iterative nature of development
- complexities of integration and deployment
- regulatory and ethical considerations involved.



At Wizeline, we feel these too, and we've learned from them. That's why we created WIZECores.

Every company needs to know and understand where to start when it comes to formulating their AI strategy and moving to solutions, and WIZECores – our AI accelerators – can be a tremendous asset when embarking on any AI project.



WHAT ARE THE WIZECORES?

WIZECores are the building blocks that Wizeline crafted to accelerate the process of developing AI-Native products and solutions. In essence, WIZECores are to AI-Native solutions what atoms are to matter, or what cells are to organs or in simpler terms, what a foundation is to a building a house.

What does that mean? With our established WIZECores, we're never starting from scratch. The accelerators we have created can be mixed, matched, and repurposed to form AI-powered solutions that meet industry-specific business goals, faster.



MEET THE WIZECORE ACCELERATORS

the building blocks we use to build AI products, fast.

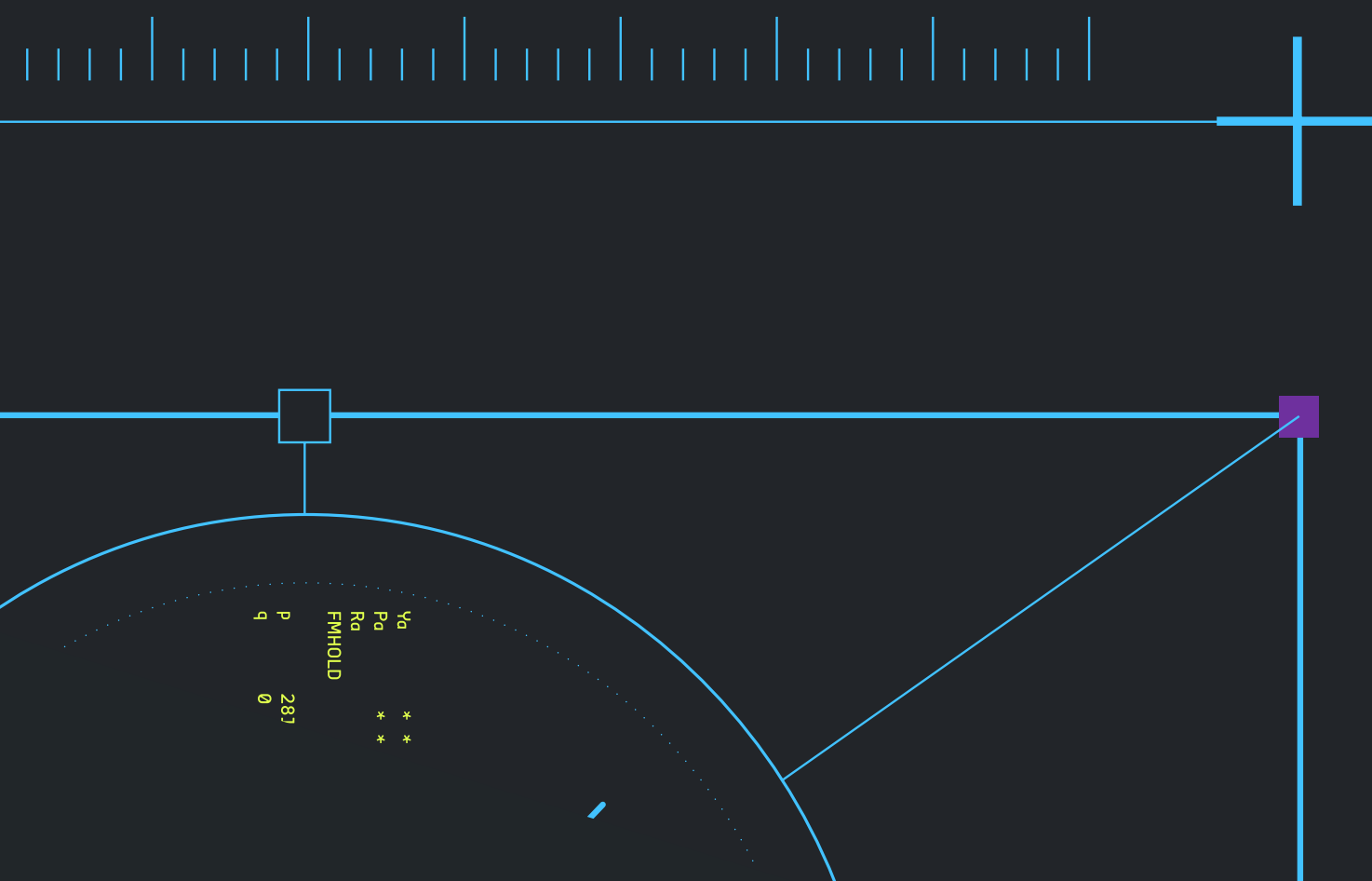


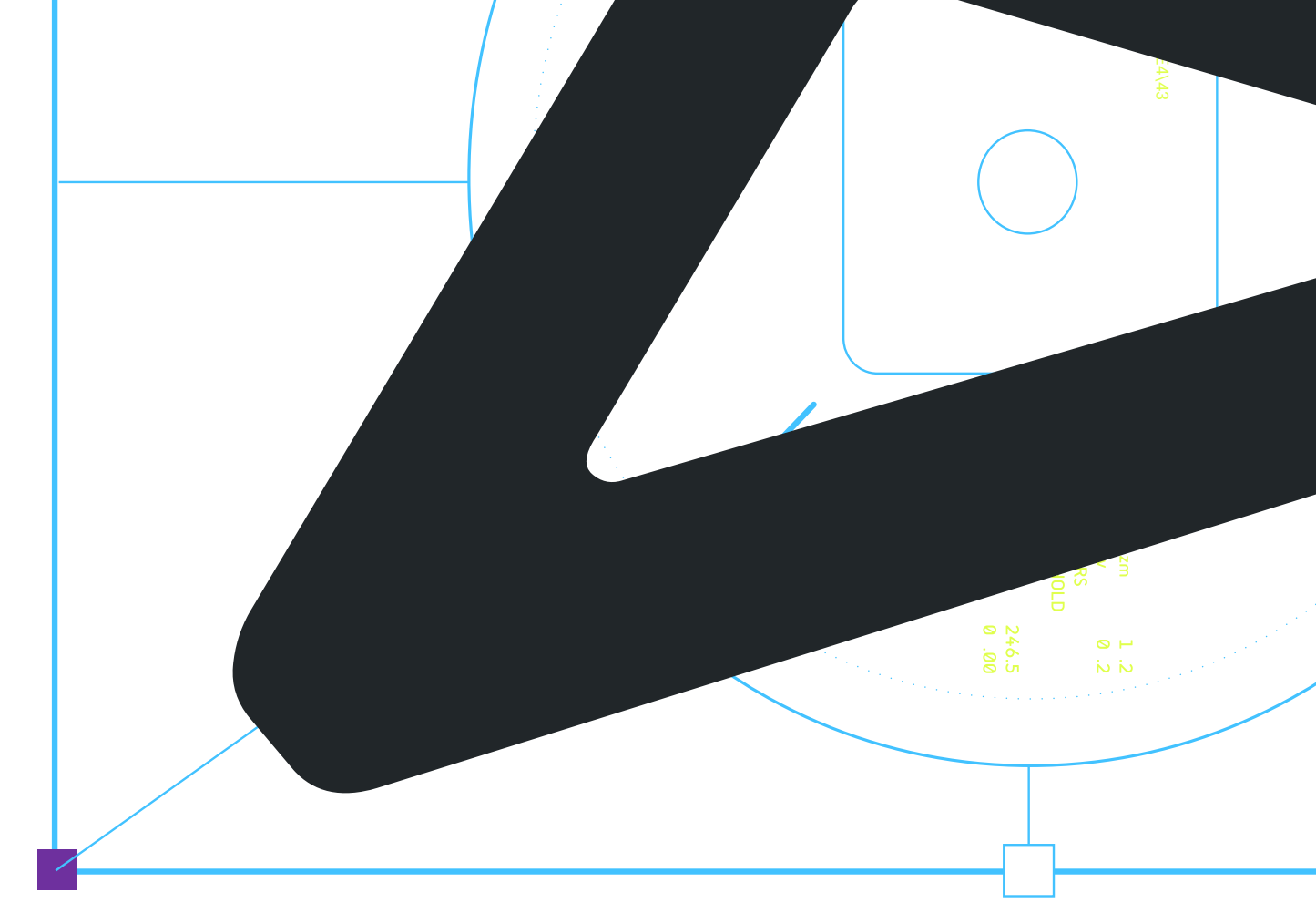
1. Context

- Description: Gives personality to an AI-powered product by structuring data - turning a given knowledge base or data set, into information an AI system can use.
- Usage: The Context Accelerator takes in all kinds of data in heterogeneous formats (for instance, unstructured raw data, text, and tables), then processes it with different methodologies and models: RAG, custom LLMs, and traditional ML techniques. Finally, it outputs actionable data that can be used to provide descriptions, insights, and recommendations.

2. Dialogue:

- Description: Delivers linguistic capabilities to an AI, so that it answers not only current questions but also questions from past conversations. It's also meant to recognize specific users and specific needs and adapt to them.
- Usage: The Dialogue Accelerator takes as input queries or instructions in text format (which may add to a long chat history), embeds them in a mathematical representation, processes them while keeping track of contextual information, and outputs a relevant response.





3. Speech:

- Description: Brings speech capabilities to AI, to both understand audio and answer through it.
- Usage: The Speech Accelerator processes audio with specialized ML models. Therefore, it takes as input a sequence of sounds and turns it into mathematical representations usable by machines. It then categorizes those representations and uses the categories to generate either text or audio as a response to the input sequence. The processes involved are known as Speech-to-Text and Text-to-Speech, Audio-to-Text and Text-to-Audio.

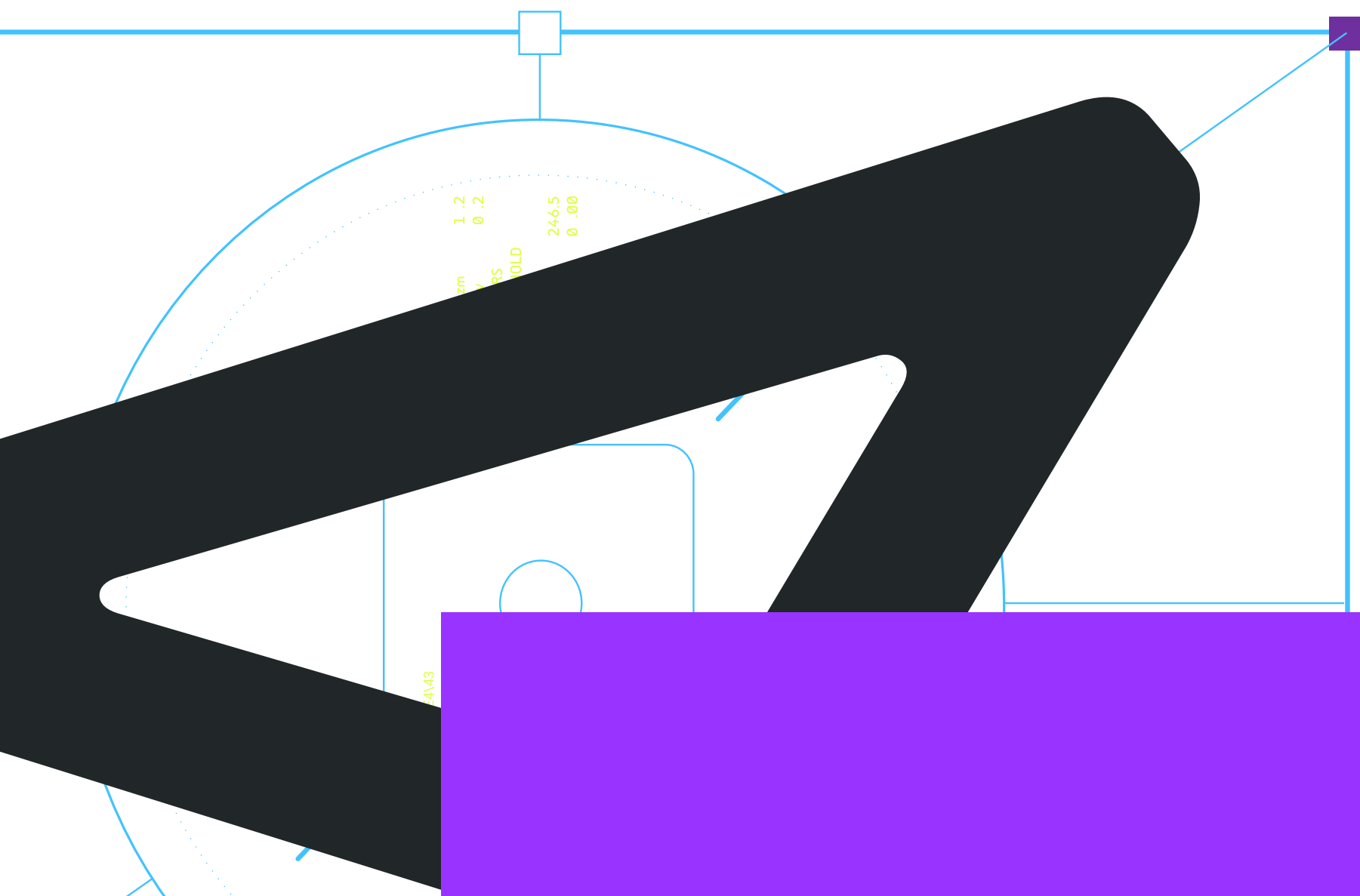


4. Vision:

- Description: Brings vision capabilities to AI, enabling a better understanding of images and videos, while producing data and insights based on those images/videos.
- Usage: The Video Accelerator processes image and video with specialized computer vision techniques such as OCR, ML-based Image Recognition, Character Recognition, and Shot Detection, as well as models of Video-to-Text. It takes image or video input, turns them into mathematical representations usable by machines, then labels these representations and uses those labels to provide insights which can be displayed in text.

5. Mask:

- Description: Protects “personal identifiable information” (PII) or customer-specific sensitive data from being misused in a pipeline feeding an AI system.
- Usage: The Mask Accelerator identifies PII and sensitive data in datasets, then masks or anonymizes such data so that it can be ingested in a pipeline. This way, the AI system will only handle anonymized information. Once this info is processed by the AI system, it is ‘unmasked’ in the output for the user.



6. Actions:

- Description: Automates activities and enables processes without human intervention.
- Usage: The Actions Accelerator involves a variety of protocols (both high- and low-level) that are performed autonomously by an AI system, triggering all the processes needed to satisfy a user's goal. In essence, it contains all the steps taken to perform a state transition within a system.



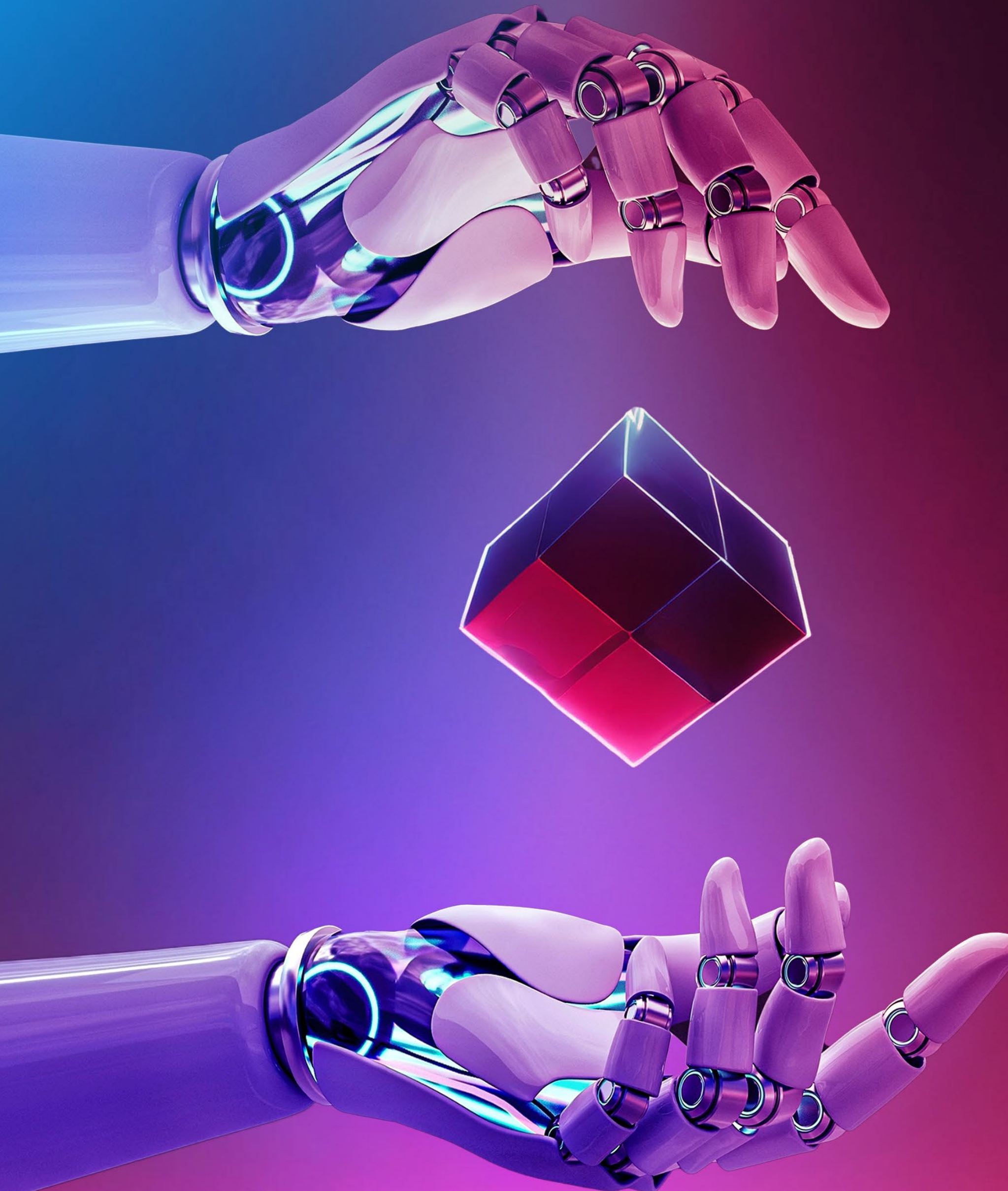


Our AI Accelerators have revolutionized the way we build AI applications, making development faster and more efficient. These modular, serverless components allow developers to quickly assemble comprehensive AI solutions, circumventing the traditionally time-consuming processes of trial and error and extensive development cycles, and reducing development time for new solutions from months to weeks.

Recognizing the value of speed in today's competitive landscape, Wizeline committed to evolving this modular and accelerated approach even further.

Which brings us to our WIZECores - revolutionary AI products tailored to meet the unique demands of specific industries. They come pre-built with industry-specific features and capabilities, making them highly effective right out of the box. However, their true strength lies in their flexibility; WIZECores can be easily adapted and customized to fit the precise needs of different clients and applications. This adaptability ensures that businesses can leverage powerful AI solutions without the need for extensive development or infrastructure setup.

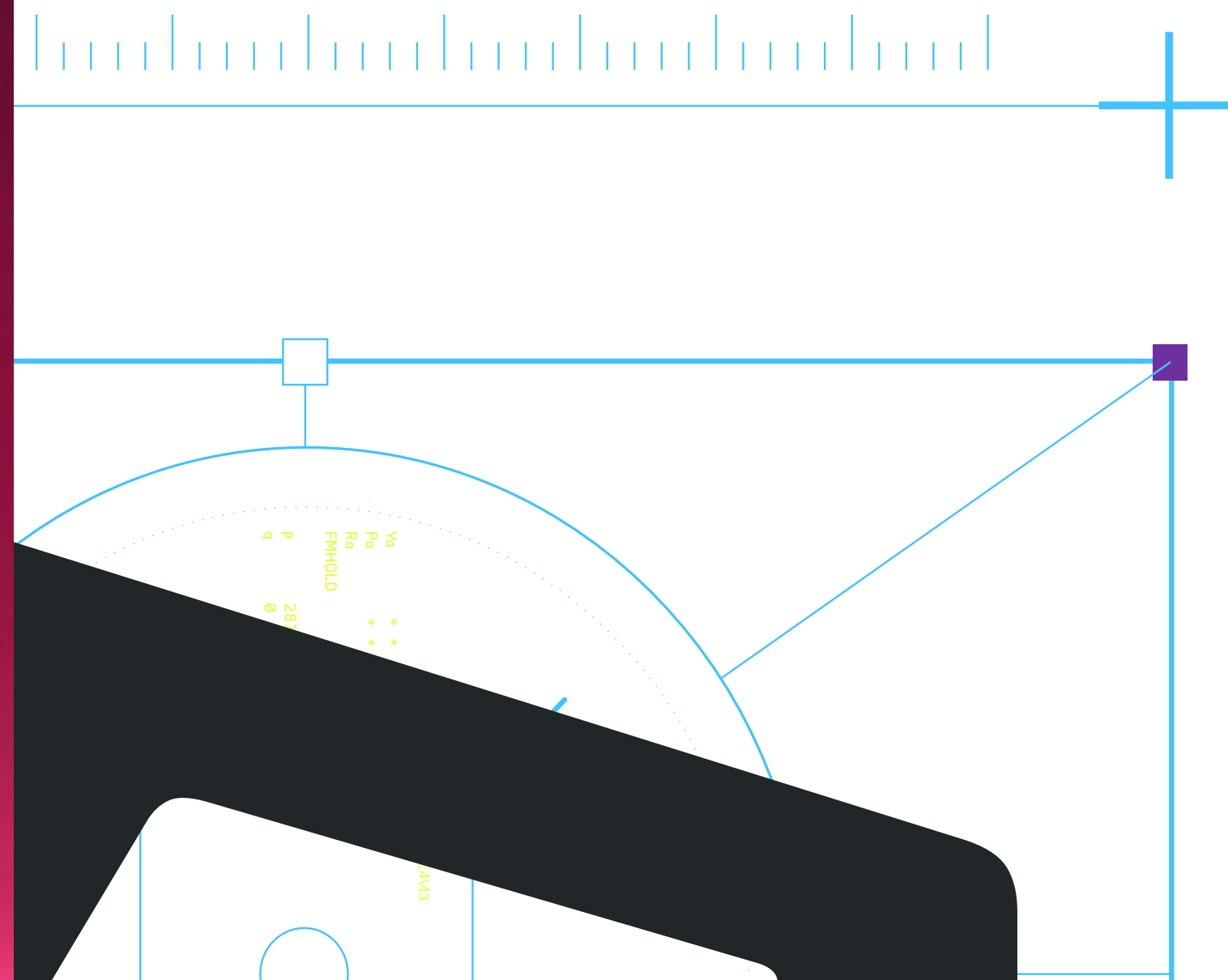
Let's take a closer look and see WIZECores in action.



WIZECORES IN ACTION:

Meet our next-gen industry solutions.

WIZECores harness the power of Artificial Intelligence to tackle industry specific challenges and create disruptive solutions that are both powerful and adaptable in nature.



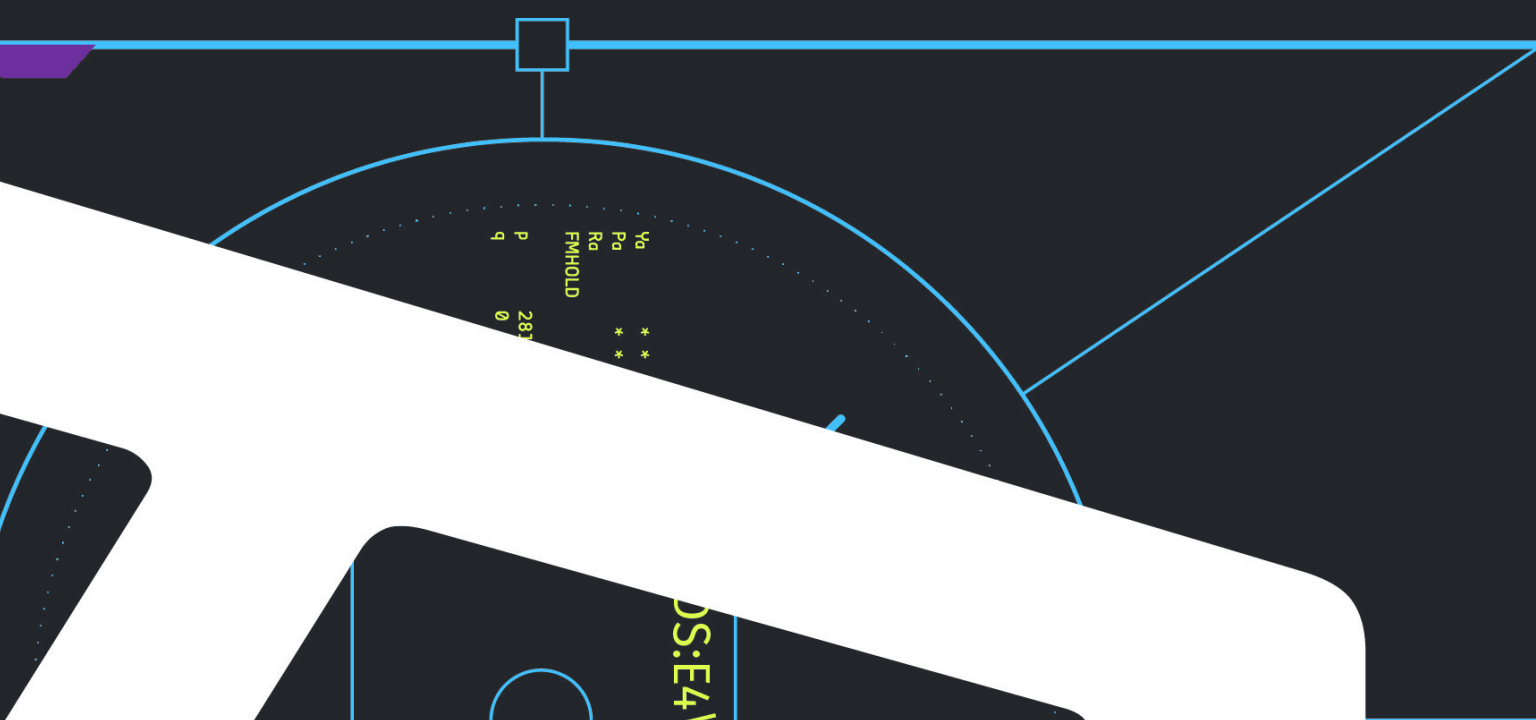
14

WIZELINE VIDEO SEGMENTATION ENGINE

Industry: Media & Entertainment

About: This comprehensive solution for media & entertainment revolutionizes the process of live event coverage.

Start	Speaker	Sentiment	Celebrities	Transcription	Image summary
---	---	===	==	████████████████████ ████████████████████ ████████████████████ ████████████████████ ████████████████████ ████████████████████ ████████████████████	████████████████████ ████████████████████ ████████████████████ ████████████████████ ████████████████████ ████████████████████ ████████████████████ ████████████████████ ████████████████████ ████████████████████

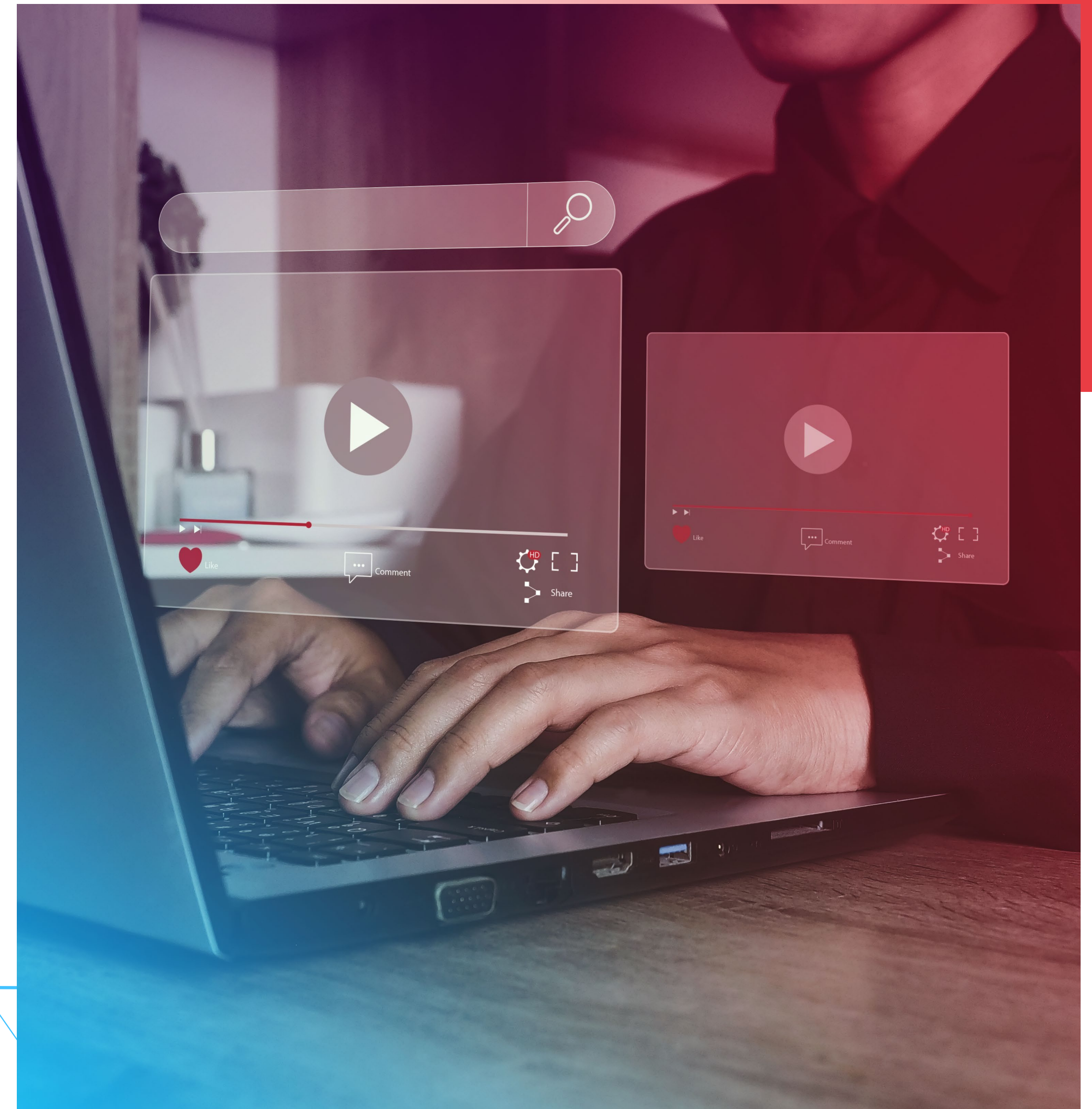


The Wizeline Video Segmentation Engine seamlessly integrates into diverse production workflows and revolutionizes how live media coverage is processed, reported, and repurposed.

Built on top of AWS' Media Replay Engine framework, we created an automated video clipping and replay (highlight) generation pipeline using AWS services for live and video-on-demand (VOD) content.

Key Specs & Features

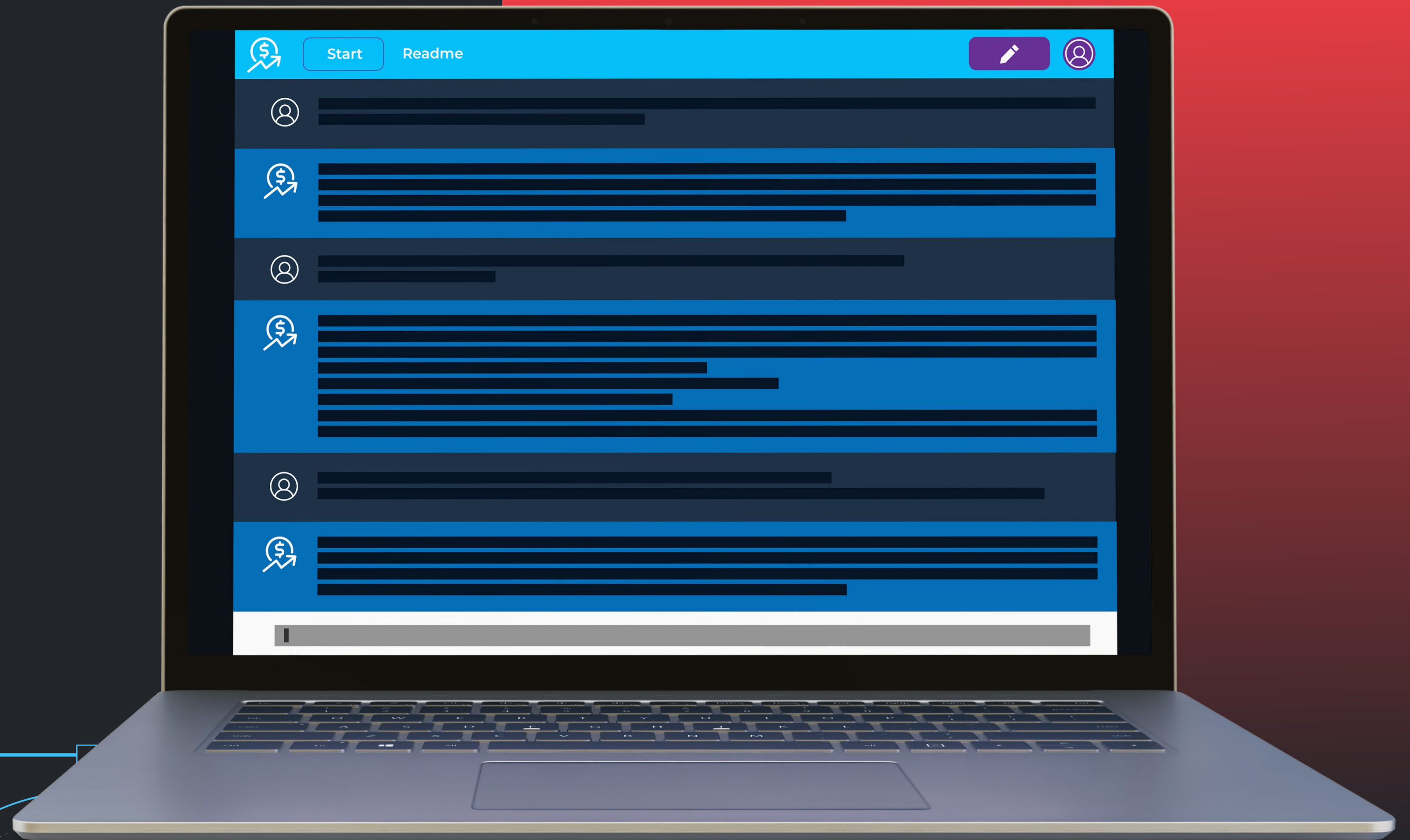
- Live Video Feed Ingest w/ Real Time Notifications
- Gen AI for Automated Video Metadata Enrichment
- Auto-Transcription, Summarization, & Translation
- Celebrity & Voice Identification w/ Sentiment Analysis
- Auto-Generation: Themes, Highlights & Clip Segments
- Recommendations for Story Development
- Clip Annotation and Favoriting
- LLM-based Natural Language Search, Discovery, & Retrieval
- Dynamic Clipping and Segmentation
- Clip Editing with EDL File Exports for MAM or PAM
- Image-to-Text at time code for Contextual Ad Placement
- Recommendations & Publishing to Social



FINANCIAL INSIGHTS ASSISTANT

Industry: Financial Services & Investment

About: A framework of interactive search & answer for financial analytics.





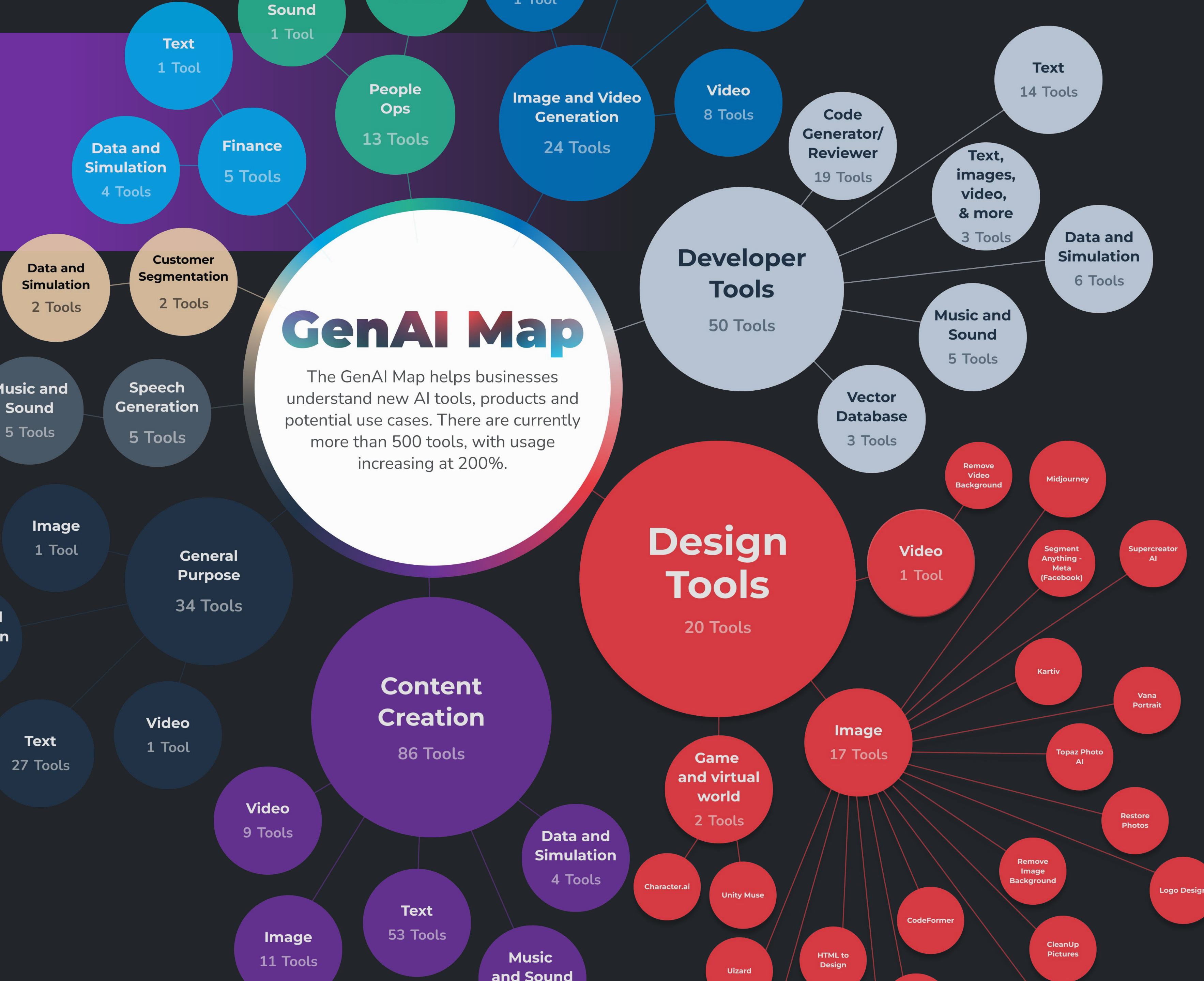
In the finance sector, information and the speed in which it is delivered are crucial.

This accelerator leverages the power of Gen AI to enhance and transform the process of global research. The framework of interactive search & answer solves queries and performs automated tasks concerning a complex knowledge base comprised of information in diverse formats and locations. The goal is to provide financial insights correctly and accurately by retrieving information from such a knowledge base. Here, two concepts are key: flexibility and specificity.

- Flexibility to be able to handle a large and diverse knowledge base (different formats of info in text, databases, transcriptions, video, audio).
- Specificity to provide answers that are correct and accurate with respect to some question or task.

The Financial Insights Assistant eliminates the need to manually navigate the ocean of information, and instead enables:

- Access to correct info fast
- Financial analytics and insights at your fingertips
- Quicker financial decision making.



GENERATIVE AI MAP

Industry: IT & Tech Services

About: This fully autonomous tool is designed to sweep the Internet, centralize information, and keep users abreast of the rapidly changing AI landscape and the increasing number of AI products and applications.

Traditionally, the process of aggregating and organizing Generative AI tools by functions and features involves a person manually gathering information from numerous web pages, analyzing it, and determining the appropriate categorization for inclusion in the list. To ensure the list remains current, it's necessary to perform this update process at least twice weekly, dedicating roughly 8 hours each week.

We've addressed this repetitive and tedious task by employing AI Agents. These agents are designed with specific roles that collectively aim to tackle the main objective. Built on Large Language Models (LLMs), they operate within the AWS cloud services infrastructure, streamlining the process through automation.

This includes an SDK to accelerate the development process, opening more room for experimentation in a production-like environment without worrying about technology stacks and infrastructure, enabling more focus on the solution.

Combining the "Context" and "Actions" Accelerators lets the AI Agents gather unstructured information from the internet, using tools to do web searches and site scraping and then pushing all the produced content into the databases.



WHAT COMES NEXT?

Needless to say, there's a tremendous amount of hype about GenAI's capabilities. But without a specific purpose or goal, these capabilities will be wasted. The underlying objective and overarching goal is to **generate value, and this was top of mind when we created our WIZECores.**

As a tech consultancy, Wizeline continually develops expertise in a variety of business domains where WIZECores will prove profitable, including:

- **Chatbots and Specialized Virtual Assistants;**
- **Code Generation;**
- **Marketing Content and Article Development;**
- **Video Transcription, Analysis and Production;**
- **Visual and Graphic Design**

With WIZECores, we're proving we can scale quickly and dramatically, and reduce time to market for AI product development. Thanks for coming, and be sure to stick around... you're going to want to see what we do next.



2024

AUTHORS AND ACKNOWLEDGEMENTS



Anibal Abarca
Chief AI Officer and CTO
anibal.abarca@wizeline.com



Marco Mendoza
Lead Data Scientist
marco.mendoza@wizeline.com



Aldo Ramirez
Senior Data Scientist
aldo.ramirez@wizeline.com

The authors would like to thank the talented Wizeline team for all their support, subject matter expertise and contributions to the AI.R+ Report, the development of WIZECores and the advancement of Wizeline's AI strategic direction.

Wizeline also thanks Tec de Monterrey for their partnership in furthering the development of GenAI innovation.



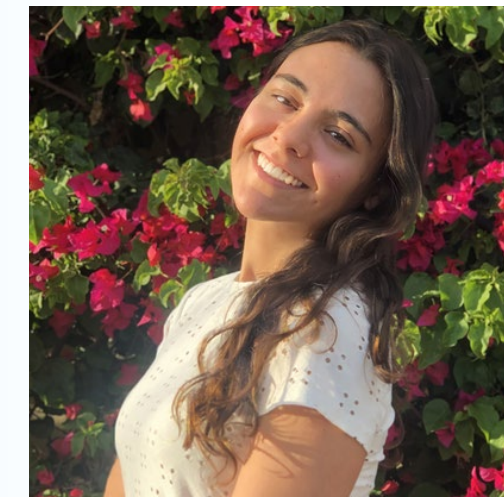
Tony Telloni
Content Strategy
tony.telloni@wizeline.com



Rachel Pagdin
AI Enablement
rachel.pagdin@wizeline.com



Leslie Balderas
Creative Brand Manager
leslie.balderas@wizeline.com



Ana Sofia Miranda
Graphic Designer
ana.miranda@wizeline.com



ABOUT WIZELINE

Wizeline is a global AI-powered software engineering company that specializes in developing cutting-edge digital products and solutions while delivering exponential productivity.

In partnership with its customers, the organization revolutionizes businesses by harnessing data and AI to accelerate time to market and drive transformative outcomes.

Wizeline's diverse culture of innovation and community offers unparalleled opportunities for talent to develop and build thriving, long-term careers.

With more than 2,000 employees across 24 countries, Wizeline services nearly 250 clients across seven delivery centers and seven business hubs.

Learn more about Wizeline:
wizeline.com

Get to know our AI.R+
Operating Framework:
www.air.wizeline.com

Reach out to connect with us at
contact@wizeline.com

Explore exciting career
opportunities at
wizeline.com/careers





WIZELINE

