



Future Now: Practical Applications of AI & How to Benefit Today

Online Panel

March 24, 2022



Session Housekeeping



Today's session is being run as a Zoom webinar, so you will be able to focus on the discussion without any additional noise.



The panelists will be asked a series of questions, and each of them will have 2-3 minutes to respond.



Please type questions in the chat during the dedicated Q&A section and we'll read your questions.



The panel discussion will take approximately 45 minutes, followed by 15 minutes of Q&A.



Our Panelists & Moderator



PAUL WALBORSKY
Founder & COO
AI.Reverie



DAVID SCHARBACH
Founder
MLOps World



ALEJANDRO ROJAS
VP, Applied Analytics
Parrot Analytics

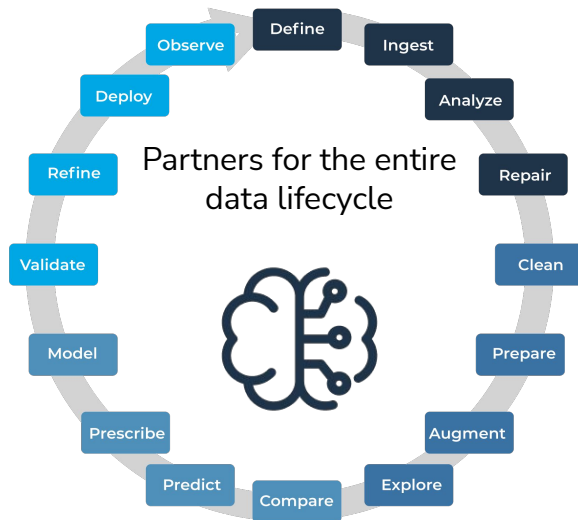


HAYDE MARTINEZ
Data Lead
Wizeline Moderator

■ **Let's Get Started!**

Our Practice at a Glance

- 150+ Data & AI Experts
- 25+ Customers
- Key Roles including Data Engineers, Data Analysts, Data Scientists & MLOps Engineers



Our Services

- AI & Machine Learning
- Advanced Analytics
- Big Data Engineering
- Data Management Platforms
- Data Lakes / Warehouses
- Robotic Process Automation

■ Q&A

Thank You to Our Panelists!



PAUL WALBORSKY
Founder & COO
AI.Reverie



DAVID SCHARBACH
Founder
MLOps World



ALEJANDRO ROJAS
VP, Applied Analytics
Parrot Analytics

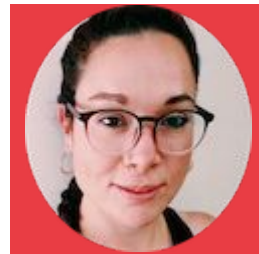


Future Now: Practical Applications of AI & How to Get Started Today

Thank you!

Wizeline is transforming the digital services industry through seamless, transparent and meaningful technology. Our technology expertise, continuous learning environment and focus on AI and customer co-creation, combined with our diverse and inclusive culture embedded in everything we do, allows us to develop and deliver high-quality, scalable solutions.

For more information, please contact:



Hayde **Martinez**
Data Lead
Hayde.Martinez@wizeline.com